



EXECUTIVE WORKSHOP
VOTING SOFTWARE

Sharpe Decisions

- A Customer-Centric Corporation
- Provides 24/7 Telephone Support –
Toll Free in North America
On-site Voting Hardware and Software
Sales and Rentals Available
Established in 1996

Voting Hardware Choices

- Clikapad CP31 & CP37
- Credit Card Sized Keypads



Voting Hardware Choices

- Fleetwood WorldWide
- Dimensions: 6"L x 2.5"W x 1"H



Voting Hardware Choices

- Fleetwood Mini WorldWide
- Dimensions: 3"L x 1.5"W x 0.4"H



Types of Questions

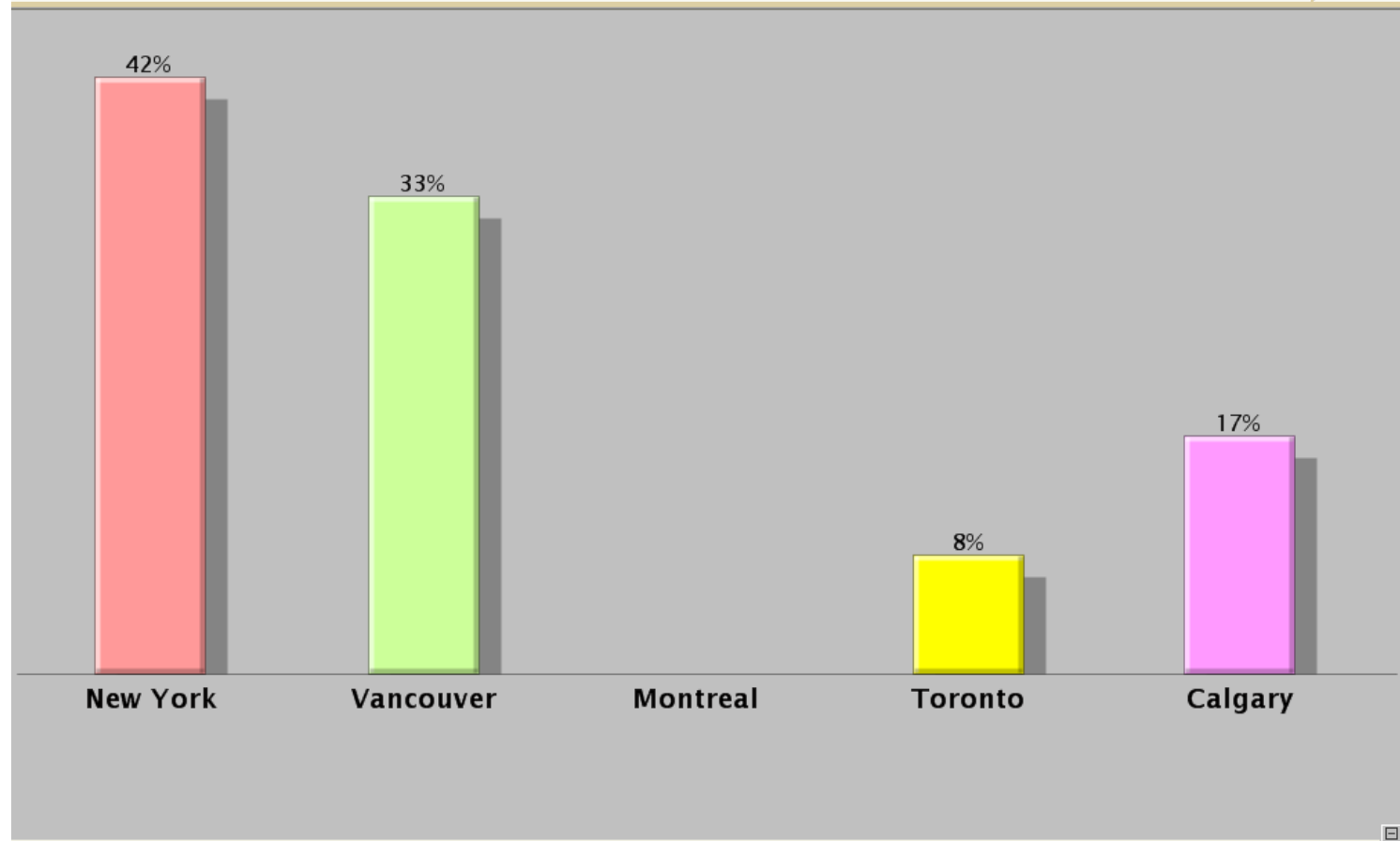
- Multiple Choice / Demographic
- Rating Scales
- Rank Ordering
- Analytic Ranking
- Relationship Modeling

Features

- Ease of Use
- Spell Check
- File Merge
- Font and Color Utilities
- Append Votes
- Instant Screen “Shots”
- Instant Reporting
- Runs in Most Languages on Native Machines

MULTIPLE CHOICE / DEMOGRAPHIC BAR CHART

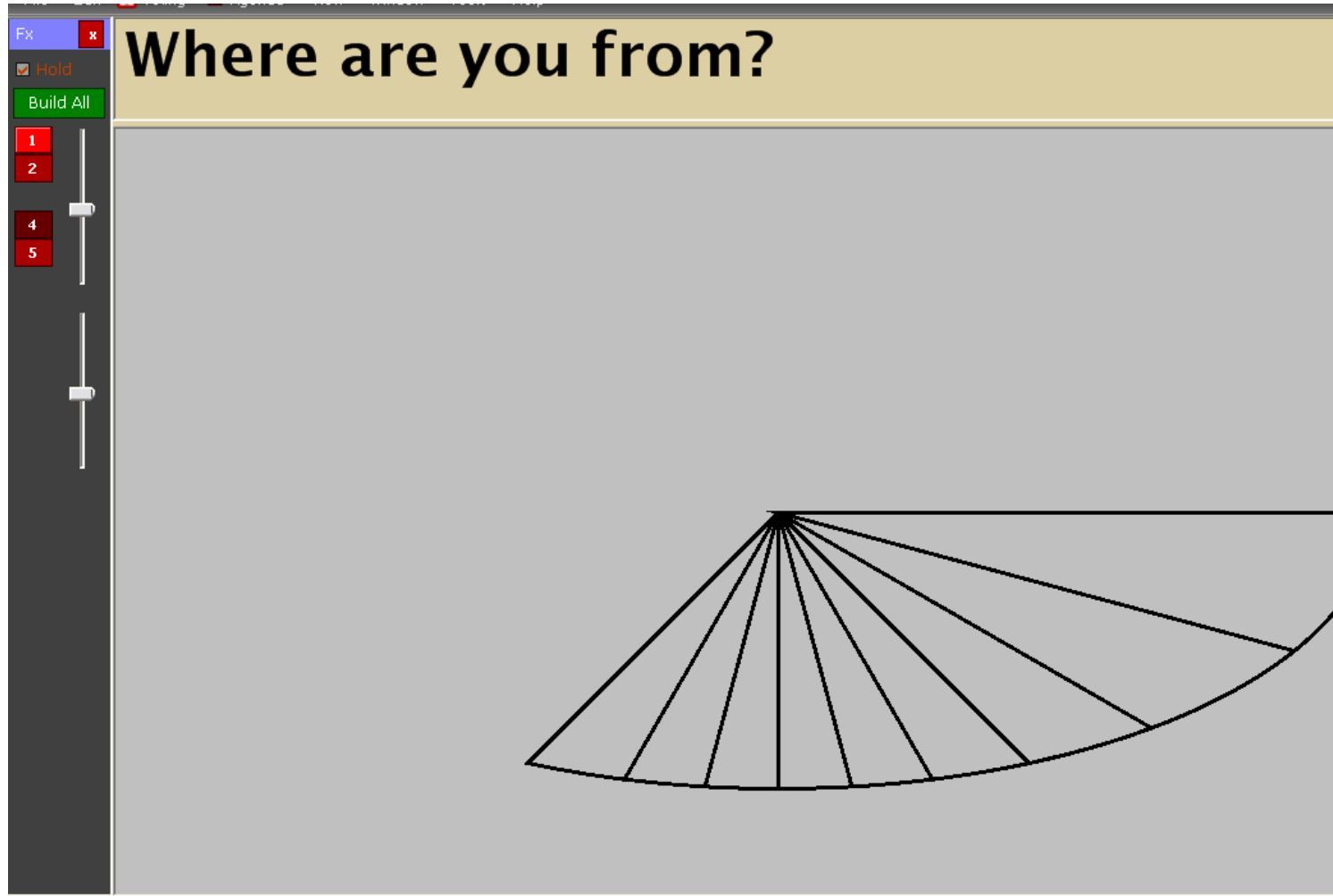
Where are you from?



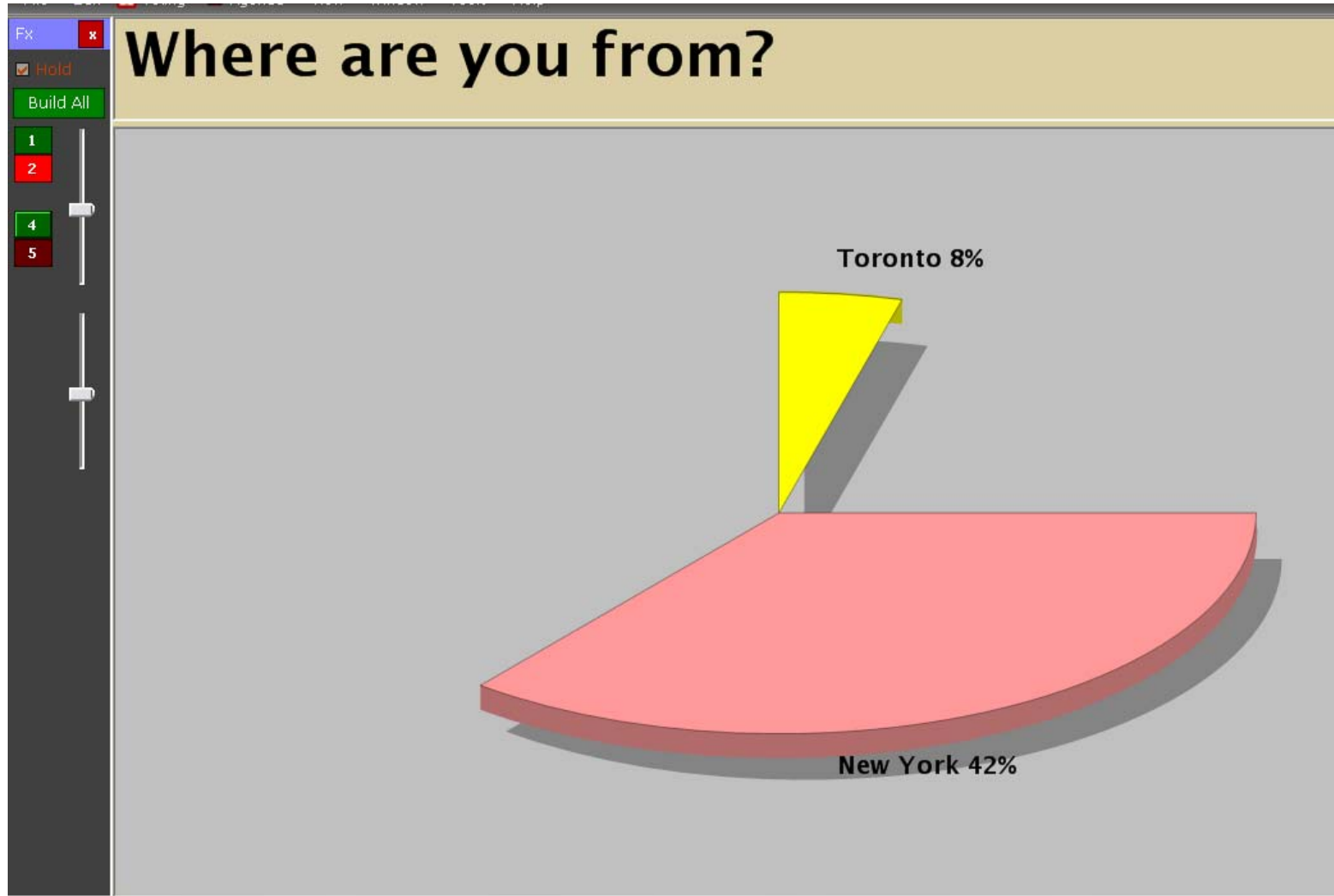
Multiple Choice

- Can be used for Demographic / Stakeholder Questions
- Can be used for general Multiple Choice Questions
- Can be Cross-tabbed against any other Multiple Choice or Rating Scale Question

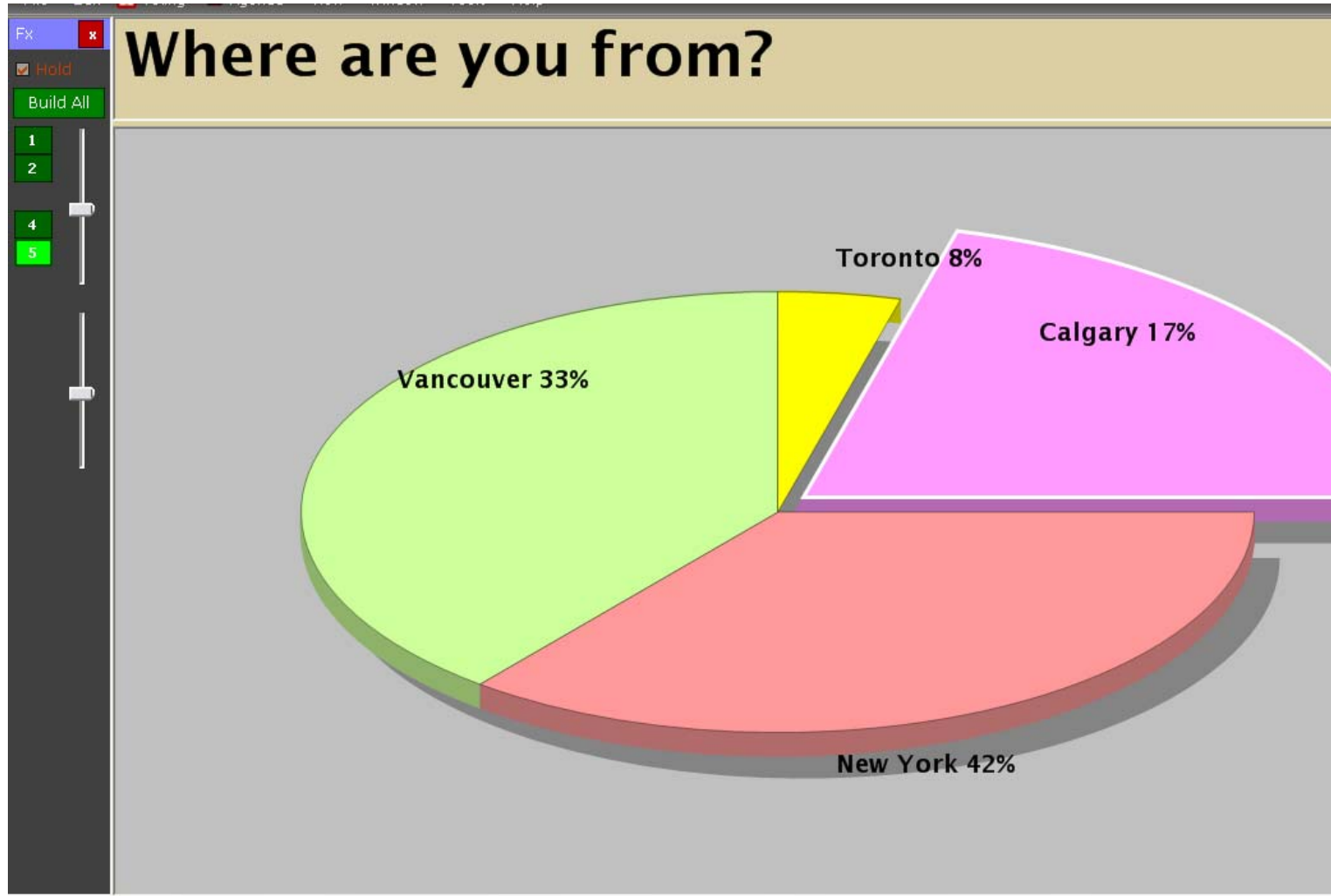
Demographic Pie Chart Build – Animation #1



Multiple Choice Pie Chart Build #2



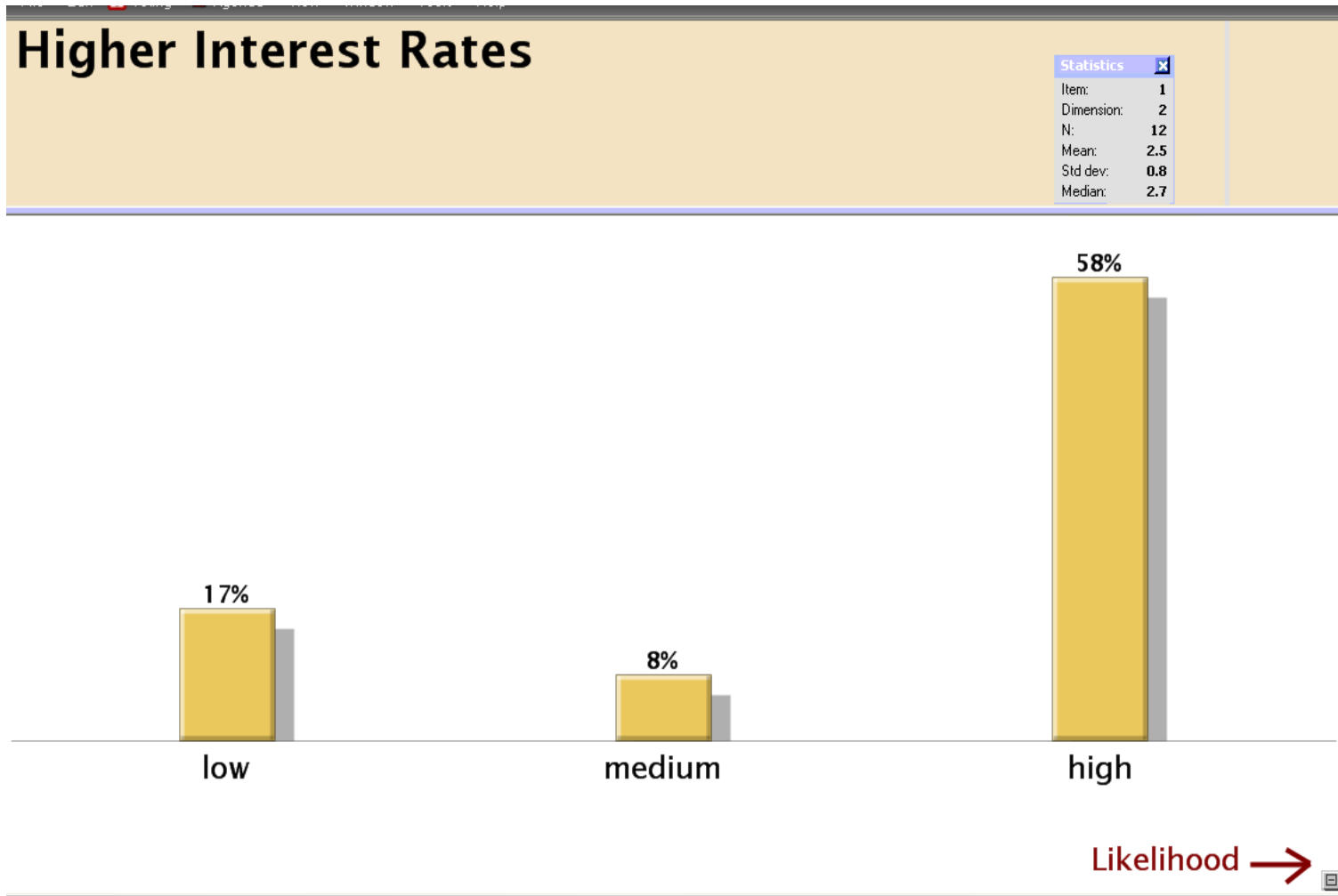
Multiple Choice Pie Chart Build #3 – Highlighted Section



Animation Effects

- Can be used in Multiple Choice
- Can be used in Rating Scales
- Individual results can appear upon demand
- Selected Choices can be highlighted
- Correct Answers can be Checked

Rating Scale Bar Chart With Statistics Window



Rating Scales

- Can Rate Items on a Scale anywhere from 1 – 10
- Results can be Cross-Tabbed by Demographic Questions
- Can have up to 20 Dimensions in a File
- Can be Plotted on an Item X-Y when using more than one Criteria for a voting Item

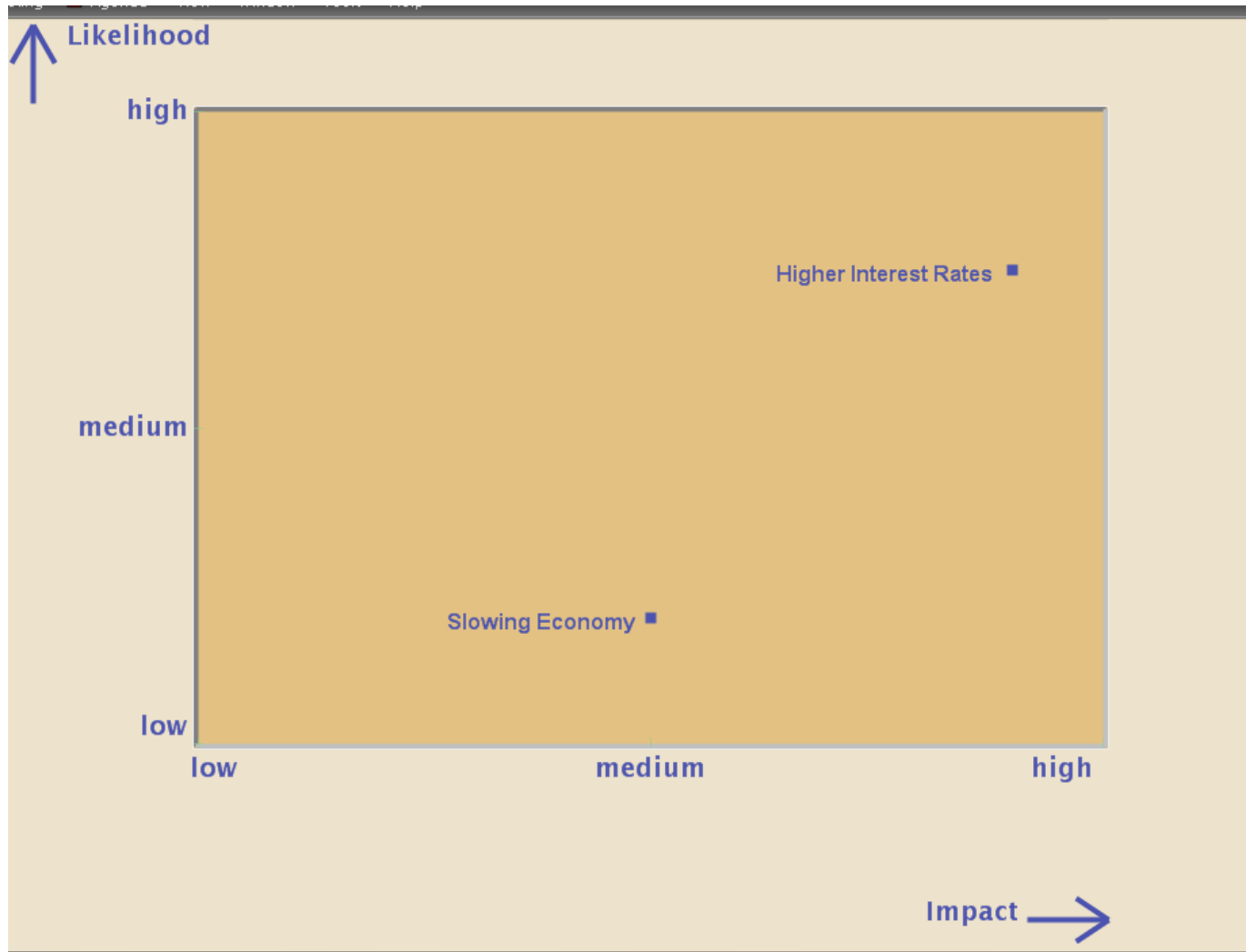
Risk Table

Add Group...		Add Item...		Measure:	Filter question:	Response
		Impact	Likelihood	Impact After Controls	Likelihood After Controls	Gross Risk
▼						
■	Ungrouped	3.5	3.7	3.0	2.6	13.1
1	Rising Interest Rates	4.0	3.8	2.8	1.3	15.2
2	Rising Electricity Rates	3.7	3.7	4.6	2.2	13.7
3	Lack of Trained Staff	2.9	3.6	1.7	3.1	10.4
4	Failing Economy	4.6	4.1	1.8	4.5	18.9
5	Lack of Training Programs	3.6	3.4	3.4	2.7	12.2
6	Competition	2.2	3.8	3.5	1.6	8.4

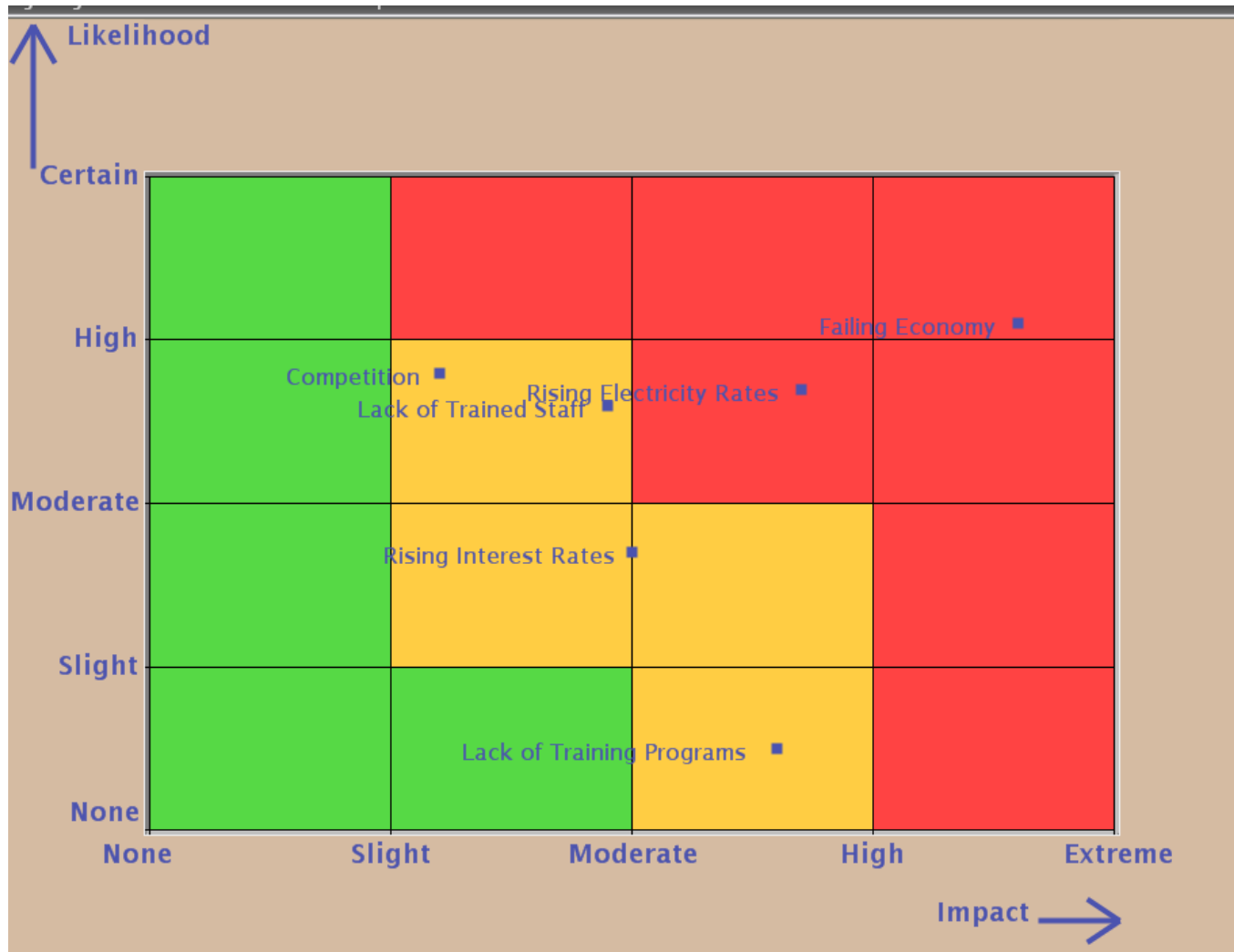
RISK TABLE IN SUBJECT GROUPS

Add Group...		Add Item...		Measure: Mean	Filter question:	Response	
		Impact	Likelihood	Impact After Controls	Likelihood After Controls	Gross Risk	
▼	Ungrouped	-	-	-	-	-	
▼	Controllable	2.9	3.6	3.5	2.2	10.3	
1	Lack of Training Programs	3.6	3.4	3.4	2.7	12.2	
2	Competition	2.2	3.8	3.5	1.6	8.4	
▼	Uncontrollable	3.8	3.8	2.7	2.8	14.5	
3	Rising Interest Rates	4.0	3.8	2.8	1.3	15.2	
4	Rising Electricity Rates	3.7	3.7	4.6	2.2	13.7	
5	Lack of Trained Staff	2.9	3.6	1.7	3.1	10.4	
6	Failing Economy	4.6	4.1	1.8	4.5	18.9	

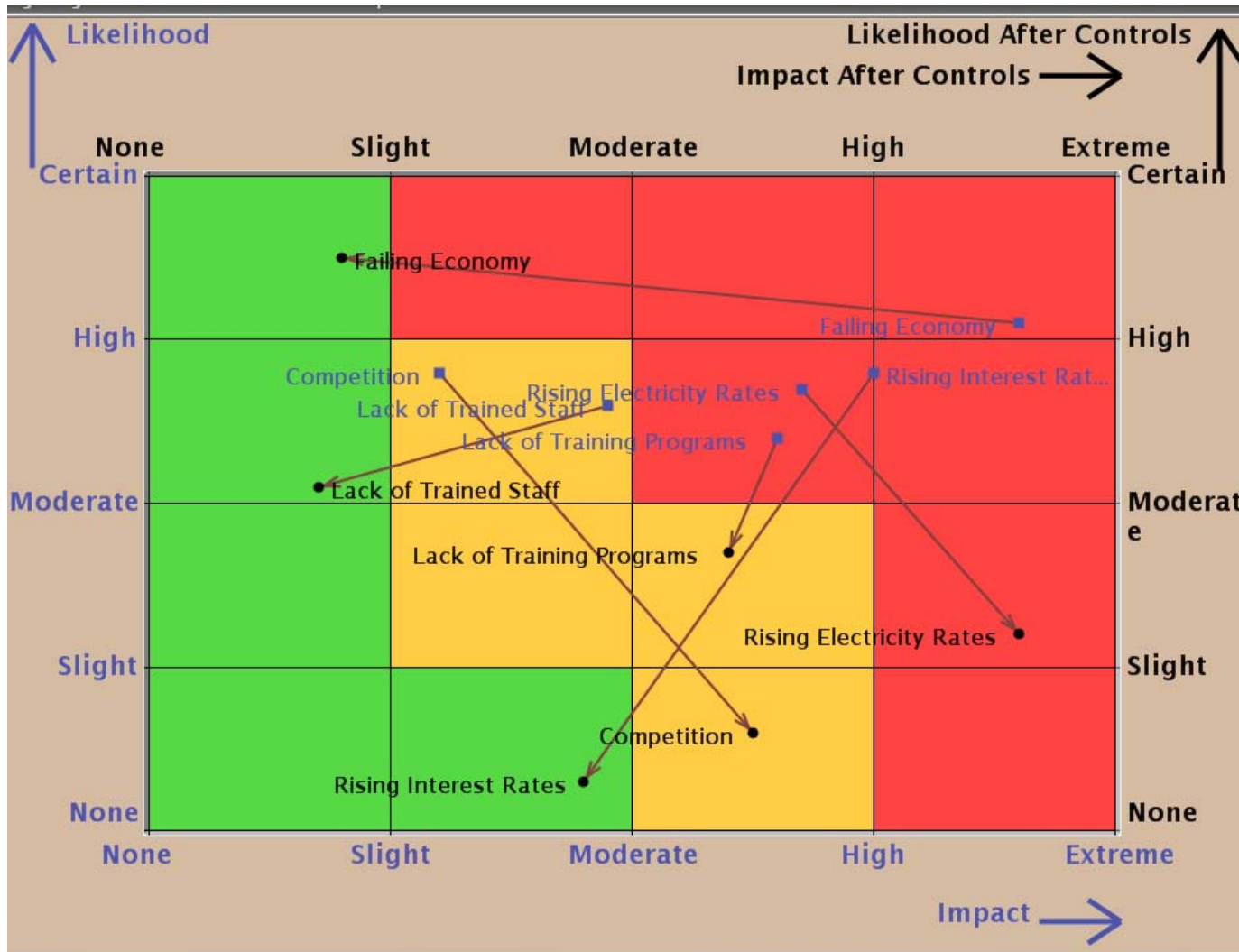
2 AXES X-Y PLOT RATING SCALES



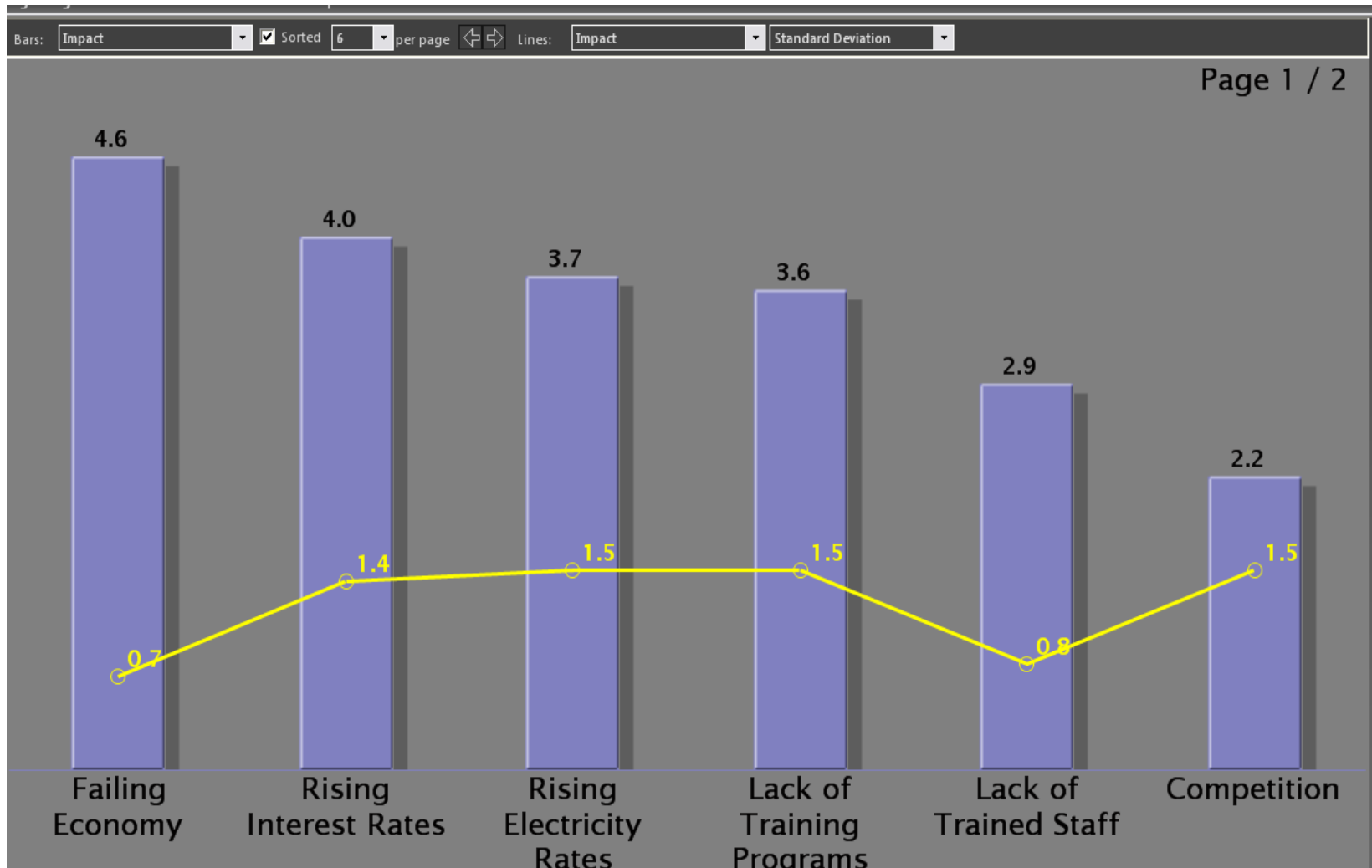
2 Axes X-Y Plot With Heat Map



4 Axes X-Y Plot With Risk “Movement” Arrows

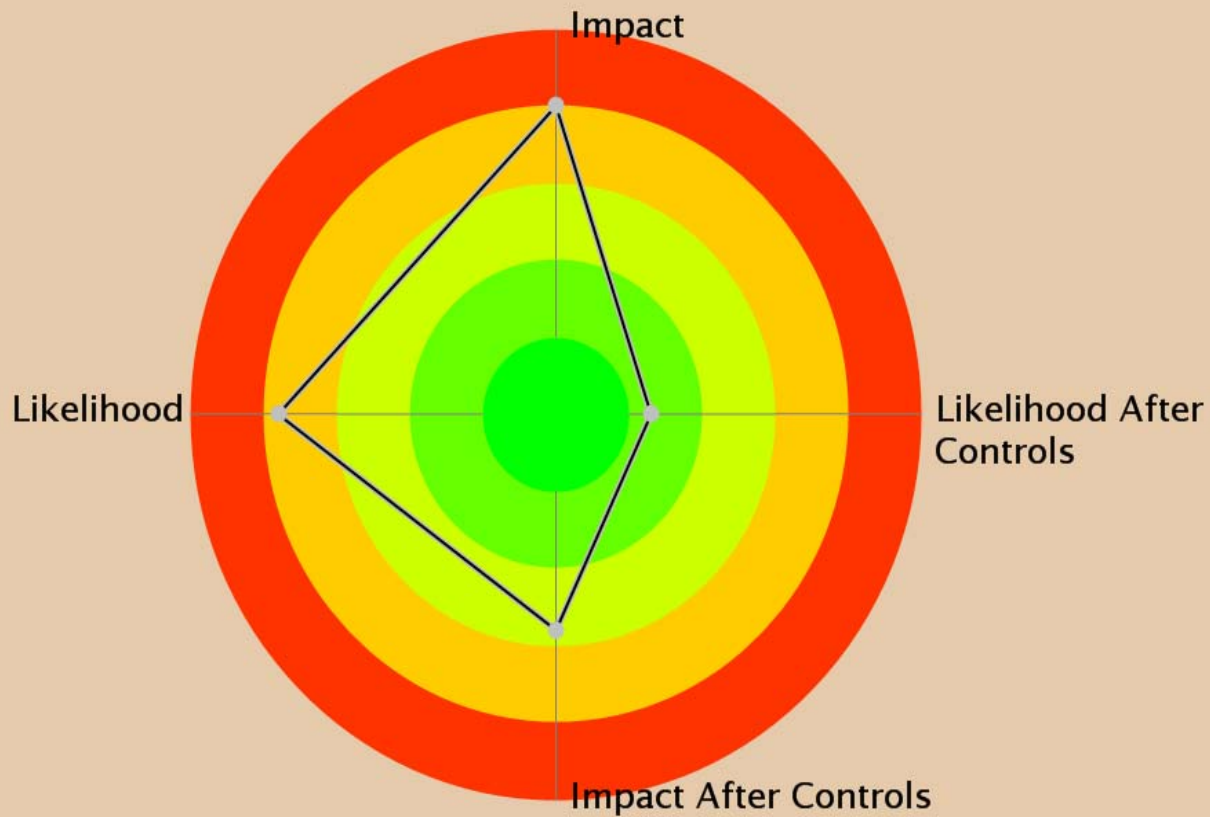


Risk Summary Sorted by Impact and Including Standard Deviation



Radar Chart – 1 Risk

Rising Interest Rates



Reporting

- Instant reports in HTML or Tab Delimited Format
- HTML reports are editable in either Word or Excel and can be viewed in any Browser
- Charts, Graphs and Tables are available

SHARPE DECISIONS INC.

- www.sharpedecisions.com
- info@sharpedecisions.com
- T: 1 888 922-1757 (North America)
- T: 1 613 258-7049 (International)
- F: 1 613 258-4651
- Web Demos Available
- Executive Workshop Voting Software: Used by Risk Managers in 22 Countries